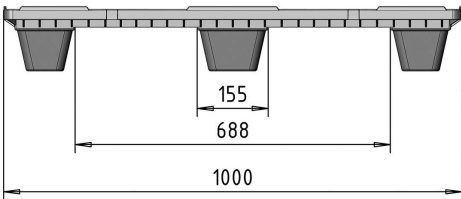
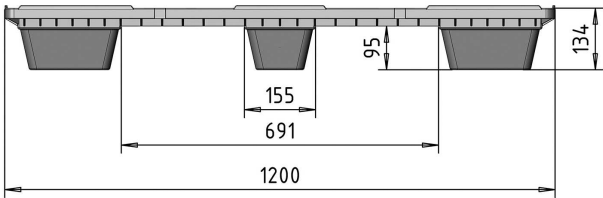


REP

1200 X 1000 | 9 FEET | OPEN DECK



TECHNICAL DATA

Measures (mm)	1200 x 1000 x 134
Weight (kg +/- 4%)	6,3
Material	Recycled HDPE or PP
Static load* (kg)	1500
Dynamic load** (kg)	850
Load in rack*** (kg)	-

CHARACTERISTICS

Standard color	Black
Lip (mm)	6
Temperature range (°C)	-20 to +40

OPTIONS

No lip / Special color / Virgin material / Forklift supporting areas

PACKAGING

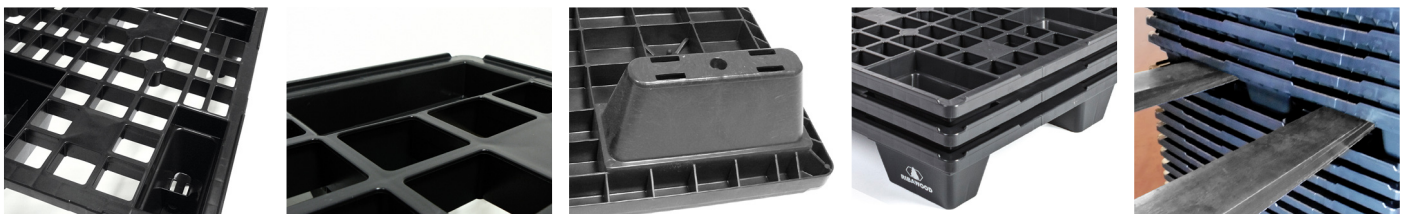
(indicative values)

Packaging unit (pcs)	48
Bulk size (mm)	1200 x 1000 x 2400
Truck (pcs)	1248

PERSONALIZED MARKING

(consult conditions)

Heat stamped



* **Static load:** Uniformly distributed load which the pallet can support when placed on a flat, horizontal rigid surface, at a temperature of approximately 20°C.

** **Dynamic load:** Uniformly distributed load which the pallet can support when transported or manoeuvred on a conventional forklift or pallet truck, at a temperature of approximately 20°C.

*** **Load in rack:** Uniformly distributed load which the pallet can support when resting on the skids on its short side on a standard rack, at a temperature of approximately 20°C.

The indicated values are approximate and based on experience and practical cases. Any deterioration or different loading, temperature or storage method conditions, can cause this data to vary.

We reserve the right to modify any information provided herein without prior notice.

We recommend testing the pallet before use.